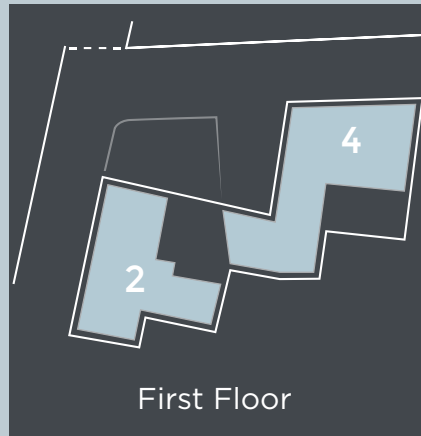
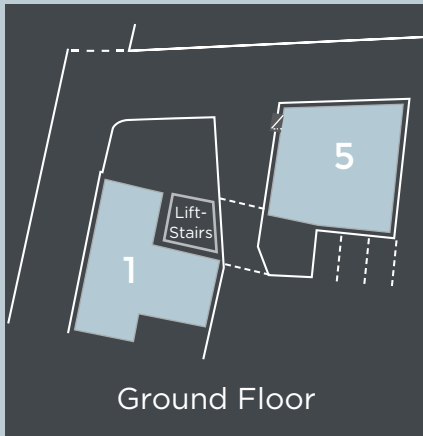


SADLERS WAREHOUSE
LITTLE LONDON

FLOOR PLANS

Apartment Plan



The floorplans, site plan and specification are for guidance purposes. All dimensions have been taken from plans and although every care has been taken to ensure their accuracy, this cannot be guaranteed. The contents of this brochure do not form part of, or constitute a representation, warranty, or part of any contract.

Apartment One



Ground Floor

Sitting Room	8485 x 4890 mm	27'8" x 16'0"
Bedroom 1	4850 x 3850 mm	15'9" x 12'6"
Bedroom 2	3465 x 3295 mm	11'3" x 10'8"

Lower Ground Floor

Kitchen/Dining	7590 x 3995 mm	24'9" x 13'1"
Family Room	4305 x 4185 mm	14'1" x 13'7"

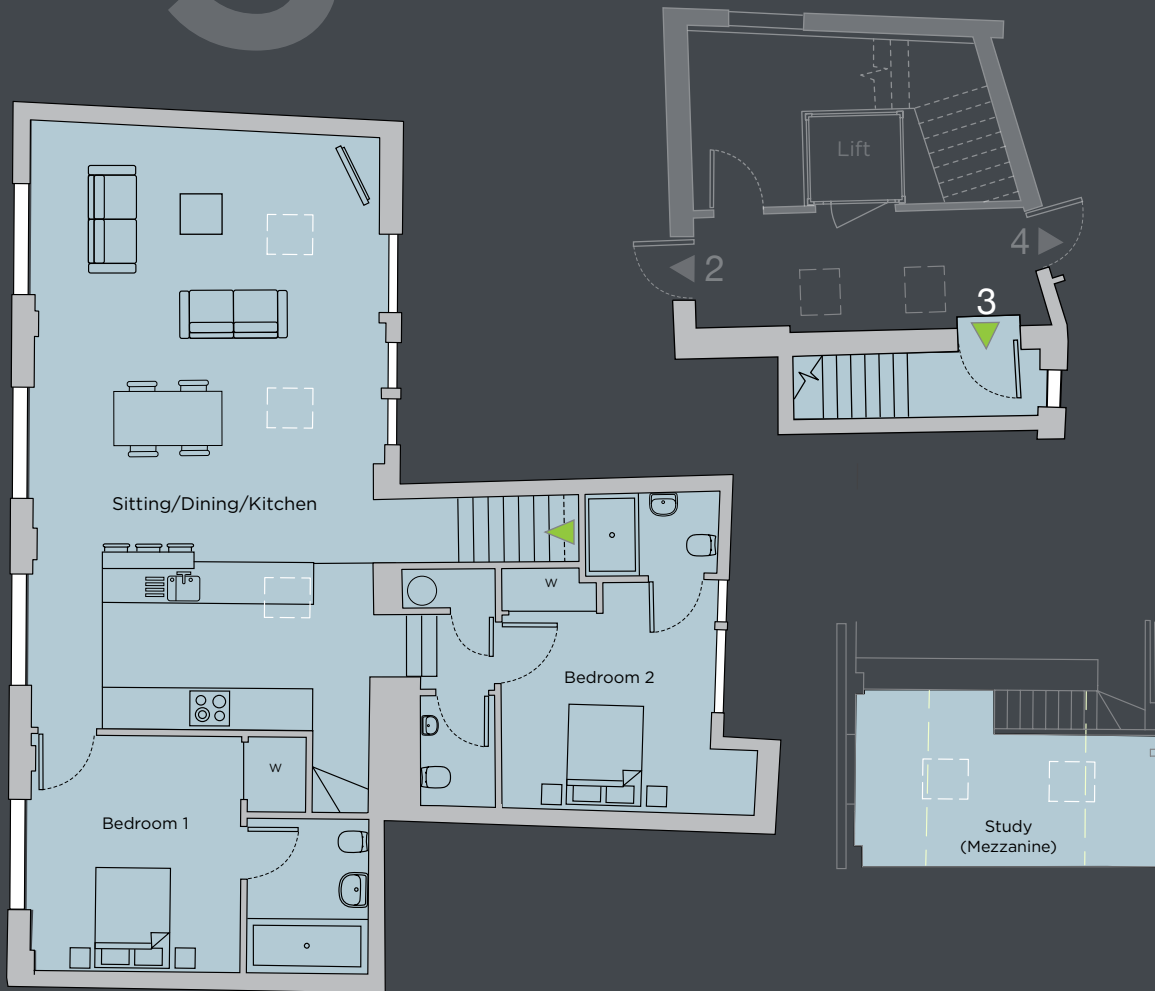
Apartment 2



First Floor

Sitting/Dining/Kitchen	8755 x 4785 mm	28'7" x 15'6"
Bedroom 1	4045 x 3360 mm	13'2" x 11'0"
Bedroom 2	3545 x 2965 mm	11'6" x 9'7"

Apartment 3



Second Floor

Sitting/Dining/Kitchen	8920 x 5110 mm	29'2" x 16'7"
Bedroom 1	3530 x 3145 mm	11'5" x 10'3"
Bedroom 2	3440 x 3105 mm	11'2" x 10'1"
Study	5330 x 3155 mm	17'4" x 10'4"

Apartment Four

4



First Floor

Sitting Room	7355 x 4240 mm	24'1" x 13'9"
Study	2455 x 2405 mm	8'0" x 7'8"
Kitchen/Dining	9645 x 3720 mm	31'6" x 12'2"
Bedroom 1	3285 x 3230 mm	10'7" x 10'6"
Bedroom 2	3215 x 3215 mm	10'5" x 10'5"

Apartment Five

5



Ground Floor

Sitting Room	7900 x 3700 mm	25'.9" x 12'.1"
Kitchen/Dining	6700 x 5000 mm	21'.9" x 16'.4"
Bedroom 1	5400 x 3100 mm	17'.7" x 10'.2"
Bedroom 2	3800 x 2700 mm	12'.5" x 8'.9"



LOCATION

To access Little London enter East Street from either Market Avenue or The Hornet, the 2nd available right turn is Little London, Sadlers Warehouse is at the end of the road where it bends and becomes East Row.

The railway station is a 10 minute walk away with regular services to London.

Chichester is well connected via the A27/A3 across the south coast and to London.

For air travel the nearest airports are Gatwick (43 miles) and Southampton (30 miles).

Postcode: PO19 1PB

All details in this brochure are correct at the time of publication, some images used are from similar developments or for illustration purposes only

